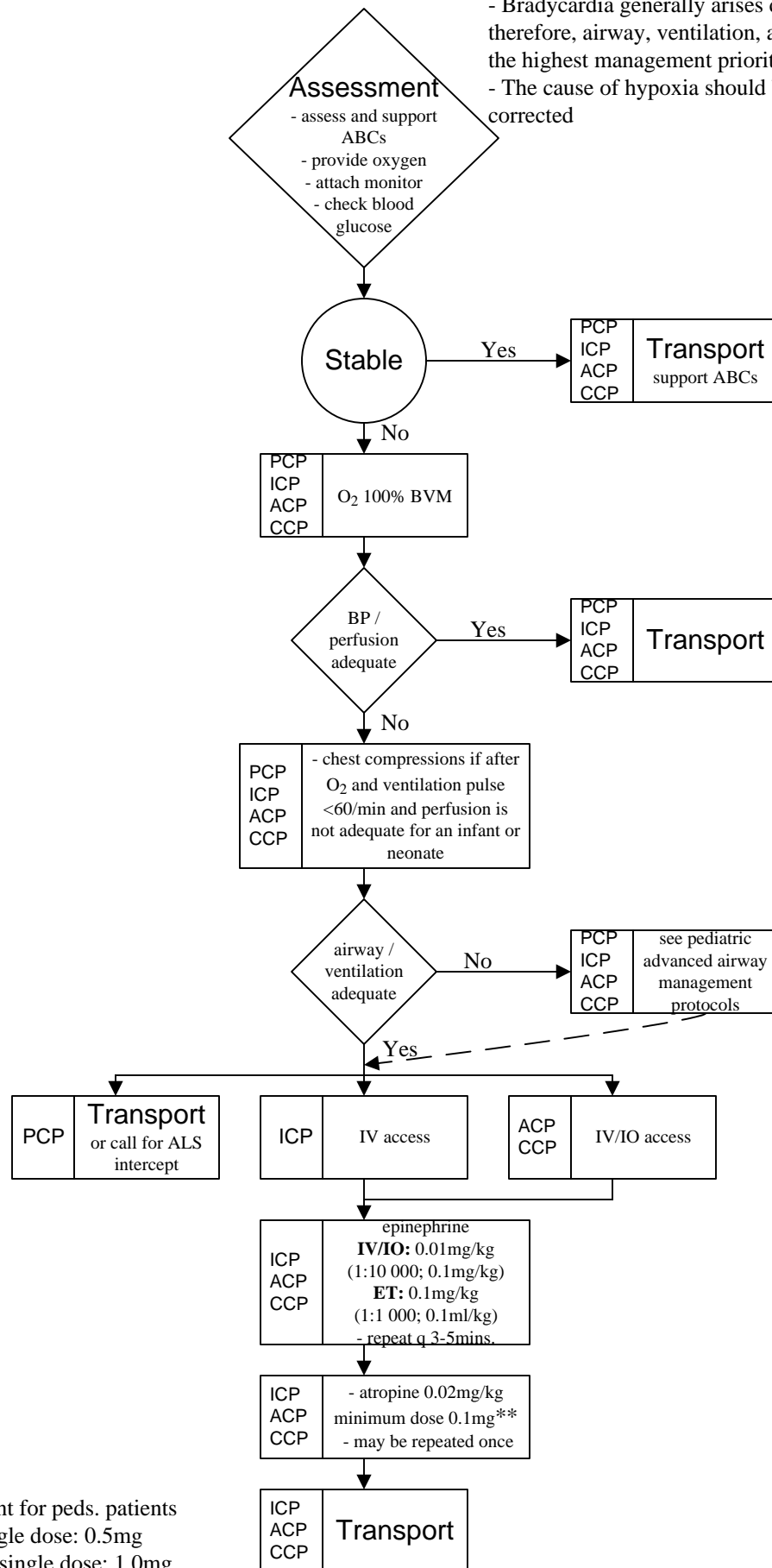


<b>Protocol:</b> Pediatric Bradycardia	<b>PDN:</b> 6260.02	<b>Last Updated:</b> April 2, 2003	<b>Subject:</b> Pediatric Cardiac Arrhythmia	Page 1
--	---------------------	------------------------------------	--	--------

- Bradycardia generally arises due to hypoxia therefore, airway, ventilation, and oxygenation are the highest management priorities  
 - The cause of hypoxia should be identified and corrected



\*BVM may be sufficient for peds. patients  
 \*\*Child: maximum single dose: 0.5mg  
 Adolescent: maximum single dose: 1.0mg